



Dynamic Engineers Inc.

2550 Gray Falls Dr., Suite#128, Houston, TX, 77077 USA
TEL: 1-281-870-8822 EMAIL: Sales@DynamicEng.com

89 \Rightarrow +* ' !% (A < n
1.4MHz Crystal Filter

Electrical Specifications

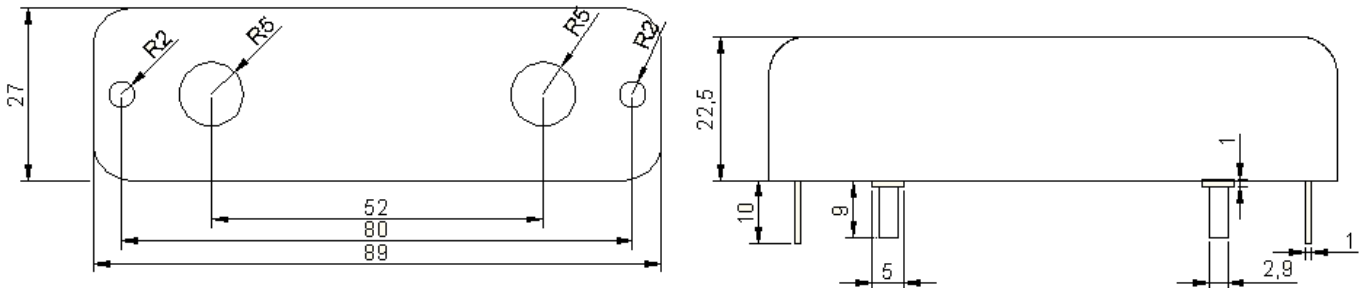
Center Frequency (Fo)	1.4 MHz
Passband Width @ -3 dB	-300 to +300 Hz min
Ripple	1 dB max
Insertion Loss	5 dB max at Fo
Stopband Width @ Fo - 4KHz	45dB Min
@ Fo + 4KHz	45dB Min
Frequency Suppression	35dB Min
Ultimate Attenuation	45dB Min
Impedance Zin = Zout	1000 Ohm

Operating Temperature

-40°C to +70°C

Mechanical Drawing & Pin Connections

Drawing No: MD20002* -1



Unit in mm
1mm = 0.0394 inches