

# OCXO2522L

High stability SMD OCXO with HCMOS Output

## Features and Benefits

HCMOS output  
 High stability SMD OCXO  
 +/-10ppb max from -55°C to +85°C  
 25.6x22.2x14mm SMD package

## Description

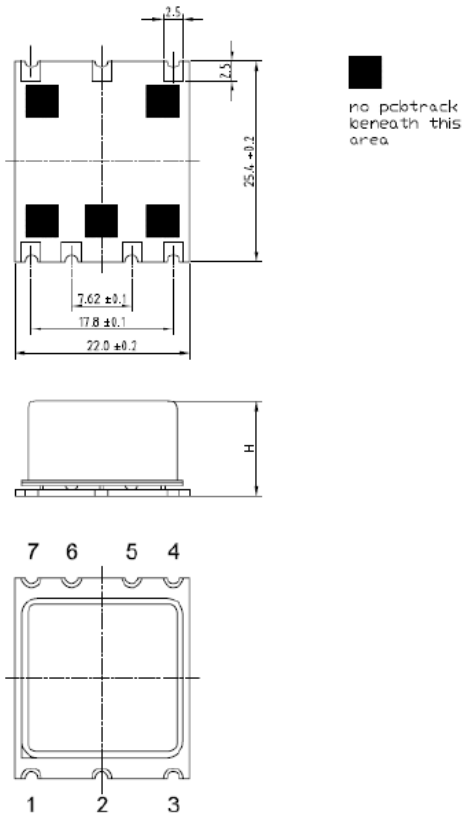
OCXO2522L is High stability with HCMOS Output OCXO

## Typical Applications

Ref for Microwave comm.. system  
 Signal Analyzer Reference for internal synthesizers  
 SATCOM System

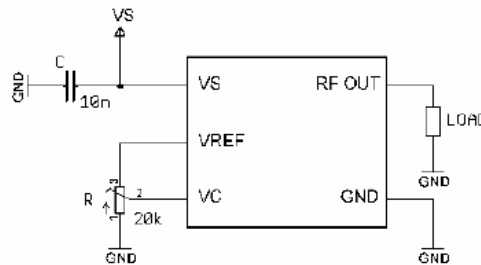
## Mechanical Drawing & Pin Connections

Drawing No: MD140068-1



### Pin connections

Pin #	Symbol	Function
1	V <sub>C</sub>	Control Voltage (EFC)
2	VREF	Reference Voltage
3	V <sub>S</sub>	Supply Voltage
4	RF OUT	RF Output
5	N.C.	No Connection
6	N.C.	No Connection
7	GND	Ground



**OCXO2522L**

High stability SMD OCXO with HCMOS Output

## Specifications

OCXO Specification	Sym	Condition	Value			Unit	Note
			Min.	Typ.	Max.		
Frequency Range	F <sub>0</sub>		10		125	MHz	
Standard Frequencies			10.000/20.000/40.000/100.000			MHz	
<b>RF Output</b>							
Output Waveform			HCMOS				
Load		+/-10%		15		pF	
Rise & Decay Time		@ 10% to 90% V <sub>cc</sub>			5	ns	
Symmetry (Duty Cycle)		@ V <sub>cc</sub> /2	40		60	%	
<b>Power Supply</b>							
Voltage	V <sub>cc</sub>		3.15	3.3	3.45	V	Optional
			4.75	5.0	5.25		
			11.4	12.0	12.6		
Current Consumption	I <sub>Steady</sub>	For V <sub>cc</sub> =3.3V @ 25°C			300	mA	Optional
		For V <sub>cc</sub> =5.0V @ 25°C			200		
		For V <sub>cc</sub> =12.0V @ 25°C			100		
Current Consumption	I <sub>Warm-up</sub>	For V <sub>cc</sub> =3.3V			800	mA	Optional
		For V <sub>cc</sub> =5.0V			600		
		For V <sub>cc</sub> =12.0V			300		
Warm-up Time		$\Delta F_{\text{final}}/f_0 < +/-0.1 \text{ppm}$ @ 25°C		3	5	min	
<b>Frequency Control*</b>							
Electronic Frequency Control(EFC)		For AT-Cut	+/-2		+/-5	ppm	Optional
		For SC-Cut	+/-0.8				
Reference Voltage	V <sub>REF</sub>	For V <sub>cc</sub> =3.3V		3.0		V	Optional
		For V <sub>cc</sub> =5.0V		4.0		V	
		For V <sub>cc</sub> =12.0V		5.0		V	
EFC Voltage	V <sub>c</sub>		0	V <sub>REF</sub> /2	V <sub>REF</sub>	V	
EFC Input Impedance			100			Kohm	
EFC Slope	$\Delta f/V_c$			Positive			
<b>Frequency Stability</b>							
Initial Tolerance		V <sub>c</sub> @ V <sub>REF</sub> /2 @ 25°C			+/-300	ppb	
Vs. Operating Temperature Range					+/-10	ppb	For more information, Please consult sale
Vs. Supply Voltage Variation(Pushing)		V <sub>cc</sub> +/-5%			+/-10	ppb	
Vs. Load Change(Pulling)		Load+/-10%			+/-10	ppb	
Aging	Long Term Per Day (After 30 Days Operation)	For AT-Cut			+/-10	ppb	
		For SC-Cut			+/-2		
	Long Term 1 <sup>st</sup> Year (After 30 Days Operation)	For AT-Cut		+/-300	+/-500	ppb	
		For SC-Cut		+/-50	+/-200		
<b>Phase Noise</b>							
Consult Sale							
<b>Environmental</b>							
Operating Temperature Range	-55°C to +85°C						
Storage Temperature Range	-55°C to +125°C						
Packing	Tape & Reel						
Size	25.6x22.2x14mm max.						
Weight	15g max						