

**Features and Benefits**

Ultra-Low Phase noise OCXO  
 Sine wave output  
 12V Power supply  
 5 minutes max warm-up  
 25.8x25.8x12.7mm max

**Description**

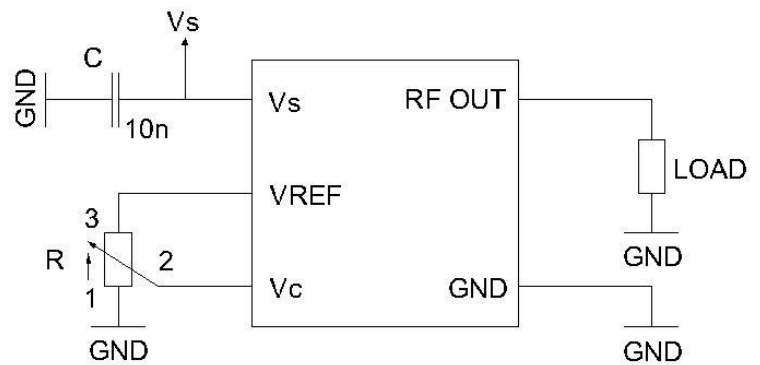
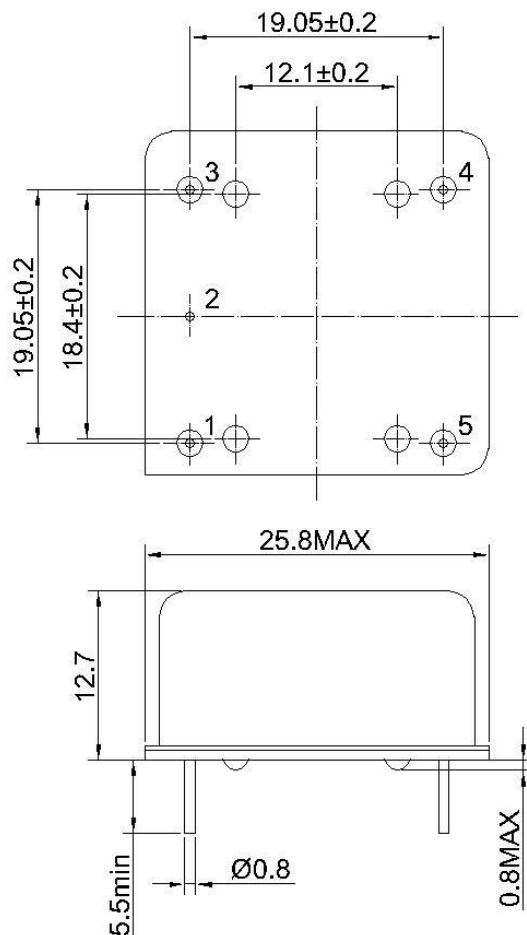
OCXO2525L-100MHz-A-V is Ultra-Low phase noise with Sine wave output OCXO

**Typical Applications**

Ref. for Microwave comm. System  
 signal analyzer Reference for internal synthesizers  
 SATCOM systems

**Mechanical Drawing & Pin Connections**

Drawing No: MD13022-3



Pin connections

PIN #	Symbol	Function
1	RF OUT	RF Output
2	GND	Ground
3	Vc	Control Voltage(EFC)
4	VREF	Reference Voltage
5	Vs	Supply Voltage

Unit = mm

## Specifications

OCXO Specification	Sym	Condition	Value			Unit	Note
			Min.	Typ.	Max.		
Frequency Range	$F_0$			100.000000		MHz	
<b>RF Output</b>							
Output waveform			Sine wave				
Load	$R_L$	+/-5%		50		Ohm	
Output Level			+7			dBm	
Harmonics					-30	dBc	
Spurious					-90	dBc	
G-Sensitivity		Per Axis			1.0	ppb/g	
<b>Power Supply</b>							
Supply Voltage	$V_{cc}$		11.4	12.0	12.6	V	
Current Consumption(Steady state)	$I_{Steady}$	@ +25°C			150	mA	
Current Consumption(Warm-up)	$I_{Warm-up}$				350	mA	
Warm-up time@+25°C		$\Delta f_{final}/f_0 < +/-0.1ppm$		3	5	min	
<b>Frequency Control*</b>							
Electronic Frequency Control(EFC)			+/-1	+/-2		ppm	
Reference output	$V_{REF}$			10.0		V	
EFC Voltage	$V_c$		0	$V_{REF}/2$	$V_{REF}$	V	
EFC Input Impedance			100			Kohm	
EFC Slope	$\Delta f/V_c$		Positive				
<b>Frequency Stability</b>							
Initial Tolerance @+25°C		$V_c @ V_{REF}/2$			+/-300	ppb	
Vs. Operating Temperature Range		From -20°C to +70°C			+/-50	ppb	For more information, Please consult sale
Vs. Supply Voltage Variation(pushing)		$V_s +/-5%$			+/-10	ppb	
Vs. Load Change(Pulling)		Load+/-5%			+/-5	ppb	
Aging	Long term Per day	After 30days operation		+/-1	+/-2	ppb	
	Long term 1 <sup>st</sup> year	After 30days operation		+/-100	+/-200	ppb	
<b>Phase Noise</b>							
Phase Noise		10 Hz		-95		dBc/Hz	
		100 Hz		-130			
		1 KHz		-158			
		10 KHz		-168			
		100 KHz		-175			
<b>Packing</b>							
Packing	Palette						
Size	25.8x25.8x12.7mm max						
Weight	20g max						