

OCXO2727L

High stability SMD OCXO with HCMOS Output

Features and Benefits

HCMOS output
High stability SMD OCXO
+/-200ppb max from -55°C to +85°C
27.8x27.8x15.5mm SMD package

Description

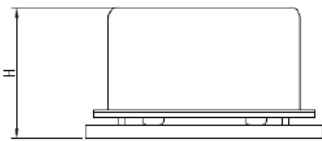
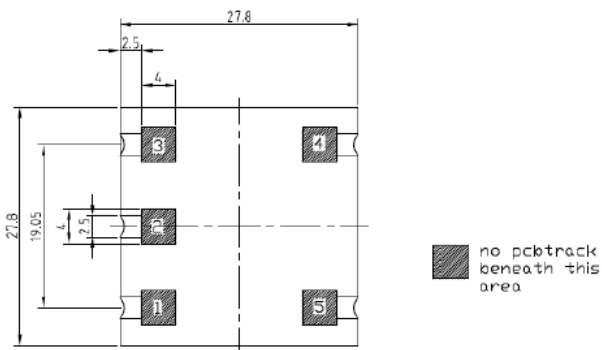
OCXO2727L is High stability with HCMOS Output OCXO

Typical Applications

Ref for Microwave comm.. system
Signal Analyzer Reference for internal synthesizers
SATCOM System

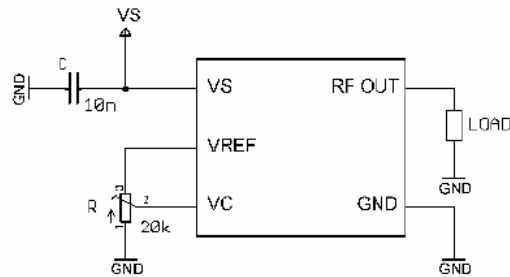
Mechanical Drawing & Pin Connections

Drawing No: MD140067-1



Pin connections

Pin #	Symbol	Function
1	RF OUT	RF Output
2	GND	Ground
3	V _C	Control Voltage (EFC)
4	VREF	Reference voltage
5	V _S	Supply Voltage



OCXO2727L

High stability SMD OCXO with HCMOS Output

Specifications

OCXO Specification	Sym	Condition	Value			Unit	Note
			Min.	Typ.	Max.		
Frequency Range	F ₀		5		40	MHz	
Standard Frequencies			10.000/12.800/20.000/40.000			MHz	
RF Output							
Output Waveform			HCMOS				
Load		+/-10%		15		pF	
Rise & Decay Time		@ 10% to 90% V _{cc}			5	ns	
Symmetry (Duty Cycle)		@ V _{cc} /2	40		60	%	
Power Supply							
Voltage	V _{cc}		3.15	3.3	3.45	V	Optional
			4.75	5.0	5.25		
Current Consumption	I _{Steady}	For V _{cc} =3.3V @ 25°C			350	mA	Optional
		For V _{cc} =5.0V @ 25°C			250		
Current Consumption	I _{Warm-up}	For V _{cc} =3.3V			900	mA	Optional
		For V _{cc} =5.0V			600		
Warm-up Time		$\Delta F_{\text{final}}/f_0 < +/-0.1 \text{ ppm}$ @ 25°C		3	5	min	
Frequency Control*							
Electronic Frequency Control(EFC)		For AT-Cut	+/-2		+/-5	ppm	
		For SC-Cut	+/-0.8				
Reference Voltage	V _{REF}	For V _{cc} =3.3V		3.0		V	Optional
		For V _{cc} =5.0V		4.0			
EFC Voltage	V _c		0	V _{REF} /2	V _{REF}	V	
EFC Input Impedance			100			Kohm	
EFC Slope	$\Delta f/V_c$		Positive				
Frequency Stability							
Initial Tolerance		V _c @ V _{REF} /2 @ 25°C			+/-300	ppb	
Vs. Operating Temperature Range					+/-200	ppb	For more information, Please consult sale
Vs. Supply Voltage Variation(Pushing)		V _{cc} +/-5%			+/-10	ppb	
Vs. Load Change(Pulling)		Load+/-10%			+/-5	ppb	
Aging	Long Term Per Day (After 30 Days Operation)	For AT-Cut			+/-10	ppb	
		For SC-Cut			+/-2		
	Long Term 1 st Year (After 30 Days Operation)	For AT-Cut		+/-300	+/-500	ppb	
		For SC-Cut		+/-50	+/-200		
Phase Noise							
Consult Sale							
Environmental							
Operating Temperature Range	-55°C to +85°C						
Storage Temperature Range	-55°C to +125°C						
Packing	Palette						
Size	27.8x27.8x15.5mm max,						
Weight	20g max						