



# Dynamic Engineers Inc.

2550 Gray Falls Dr., Suite#128, Houston, TX, 77077  
TEL: 1-281-870-8822 EMAIL: Sales@DynamicEng.com

H7 LC & \$+6 M

2.0 x 1.6 mm SMD VCTCXO

## Features and Benefits

Typical 2.0 x 1.6 x 0.7 mm ceramic SMD package  
For automatic assembly.  
Compactness and lightweight.  
Miniature size and low profile.

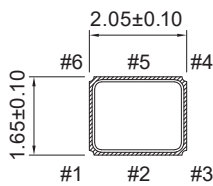
## Typical Applications

GPS  
WiMAX, WLAN  
Mobile Phone  
IoT, Wearable Electronics

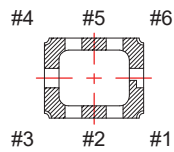
## Mechanical Drawing & Pin Connections

Drawing No: MD200047-1

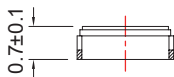
[ TOP VIEW ]



[ BOTTOM VIEW ]



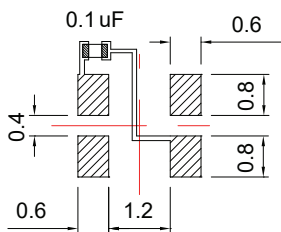
[ SIDE VIEW ]



Pin#	Function
1	Vcon: VC-TCXO GND:TCXO
2	No Connection
3	GND
4	Output
5	No Connection
6	VDD

Unit in mm  
1mm = 0.0394 inches

Solder PAD Layout



To ensure optimal oscillator performance, place a by-pass capacitor of 0.1µF as close to the part as possible between Vdd and GND pads.



**Specifications**

Specification	Condition	3.3V/3.0V/2.8V		2.5V		1.8V		Unit
		Min.	Max.	Min.	Max.	Min.	Max.	
Supply Voltage Variation (VDD)		2.66	3.465	2.375	2.625	1.71	1.89	V
Frequency Range		10	52	10	52	10	52	MHz
Frequency Tolerance	@25°C, 1 hour after reflow		±2.0		±2.0		±2.0	ppm
Standard Frequency		16.369, 19.2, 26, 38.4						MHz
Frequency Stability								
Vs Supply Voltage Change	±5%		±0.2		±0.2		±0.2	ppm
Vs Load Change	±10%		±0.2		±0.2		±0.2	ppm
Vs Aging (first year)			±1.0		±1.0		±1.0	ppm
Supply Current	10MHz ≤ Fo ≤ 26MHz	-	1.5	-	1.5	-	1.5	mA
	26MHz < Fo ≤ 52MHz	-	2.0	-	2.0	-	2.0	
Output Level (Clipped Sinewave)		0.8	-	0.8	-	0.8	-	Vp-p
Load		10kohm//10pf		10kohm//10pf		10kohm//10pf		
Control Voltage Range	VCTCXO	0.5	2.5	0.4	2.4	0.3	1.5	V
Pulling Range	VCTCXO	±5.0		±5.0		±5.0		ppm
Vc Input Impedance	VCTCXO	500		500		500		kohm
Phase Noise @19.2MHz	100Hz	-115		-115		-115		dBc/Hz
	1KHz	-135		-135		-135		
	10KHz	-148		-148		-148		
Start Time		-	2	-	2	-	2	mSec
Storage Temp. Range		-55°C to +125°C						°C

**Frequency Stability vs. Temperature**

	±0.5PPM	±1.0PPM	±1.5PPM	±2.0PPM	±2.5PPM
-20°C to +70°C	Available	Available	Available	Available	Available
-30°C to +85°C	Available	Available	Available	Available	Available
-40°C to +85°C	Available	Available	Available	Available	Available

Note: not all combination of options are available. Other specifications may be available upon request.