



Dynamic Engineers Inc.

2550 Gray Falls Dr., Suite#128, Houston, TX, 77077 USA
 TEL: 1-281-870-8822 EMAIL: Sales@DynamicEng.com

H7 LC+) \$\$E7 !) %&A <n!5 !J

Pã @Ú^!+{ { a} &^ÀT ÖÁÔÝU

Features and Benefits

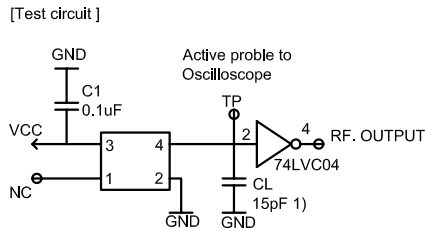
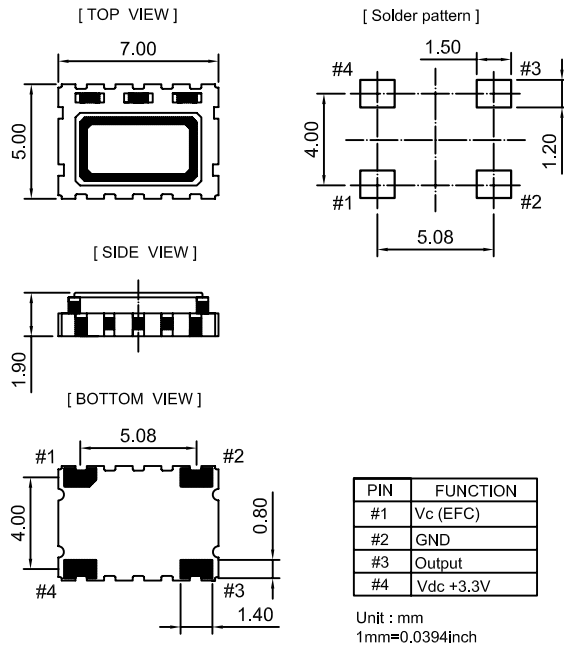
- Better than +/- 300 ppb from -40°C to +85°C
- 51.2MHz low noise CMOS output
- 3.3V supply; 8mA maximum
- Less than -135dBc/Hz @ 1KHz offset
- Less than -150dBc/Hz @ 10KHz offset

Typical Applications

- Mobile Radio
- GPS Reference
- Beidou Navigation Systems

Mechanical Drawing & Pin Connections

Drawing No: MD150004-2



1) Total CL incl. test-jig and active probe

Note:
A TCXO with marking " QCOM " is for models with frequencies greater than 50.0 MHz.

" 51.2xxx " the xxx will be for production date code.
Example: "406 " will mean week 40 2016 .



Dynamic Engineers Inc.

2550 Gray Falls Dr., Suite#128, Houston, TX, 77077 USA
 TEL: 1-281-870-8822 EMAIL: Sales@DynamicEng.com

H7 LC+) \$\$E7 !) %&A <n!5 !J

Pã @Ú^!+{ { a} &^ÂT ÖÄÔÛU

Specifications

Oscillator Specification	Sym	Condition	Value			Unit	Note
			Min.	Typ.	Max.		
Nominal Frequency	F _{nom}			51.2000		MHz	
Output Wave Form			CMOS				
Output Voltage Level "1"			0.9 V _{dc}			V	
Output Voltage Level "0"					0.1 V _{dc}	V	
Output Load		+/-10%		12		pF	
Rise & Fall Time					3	ns	
Start Time					5.0	ms	
Power Supply							
Supply Voltage	V _{cc}		3.135	3.3	3.465	V	
Supply Current					8	mA	
Frequency Control*							
Control Voltage Range	V _c		0.5	1.5	2.5	V	
Tuning Range		Positive Slope	+/-5			ppm	
Frequency Stability							
VS. Temperature		-40°C to +85°C (Ref, Fmax+Fmin)/2			+/-0.3	ppm	
Tolerance At 25°C		Frequency @25°C,			+/-1.0	ppm	
VS. Supply Voltage		Supply voltage varied +/-5% at 25°C			+/-0.1	ppm	
VS. Load Change		+/-10% load change			+/-0.1	ppm	
First Year Aging					+/-1.0	ppm	
Frequency Slope		Over operating temperature			0.05	ppm/°C	
SSB Phase noise (typ.)		100 Hz		-110		dBc/Hz	
		1K Hz		-135			
		10 KHz		-150			
		100 KHz		-155			
Environmental Conditions							
Parameter	Reference Std.		Test Condition				
Operating temperature range	-40°C to +85°C						
Storage temperature range	-55°C to +105°C						
Reflow profiles	IPC/JEDEC J-STD-020C		<=260°C over 10 sec. Max				