

Features and Benefits

- Frequency range: 1100 to 1480MHz
- Low phase noise
- Linear tuning characteristics
- Low pushing / Low pulling
- Operating temperature range -55°C to +125°C

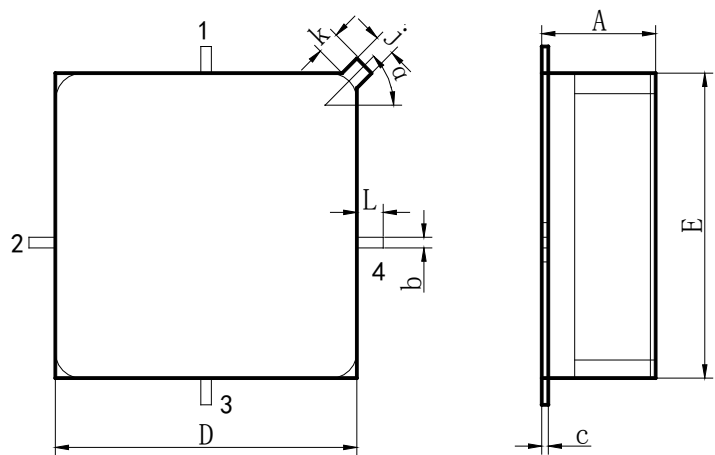
Typical Applications

- Signal Analyzer Reference For Internal Synthesizers
- Used as Part of a High Performance Oscillator Circuit

Mechanical Drawing & Pin Connections

Drawing No: MD150067-1

All Dimension in MM



- 1. Vcc
- 2. V<sub>T</sub>
- 3. GND
- 4. RF Output

Size Symbol	Value		
	Min.	Typ.	Max.
A	4. 00	—	4. 60
b	0. 32	—	0. 62
c	0. 05	—	0. 20
D	11. 07	—	11. 87
E	11. 07	—	11. 87
j	0. 60	—	1. 0
k	0. 50	—	—
L	0. 50	—	—
α	—	45°	—

## Specifications

Parameter	Min.	Typical	Max.	Units
Operating Frequency Range	1100		1480	MHz
Output Power	+10.0			dBm
Power Supply(V <sub>CC</sub> )	4.75	5	5.25	V
			70	mA
Tuning Voltage (V <sub>t</sub> )	1.0		18.0	V
Tuning Voltage Sensitivity(Kv)	30		100	MHz/V
Spurious Suppression			-70	dBc
Harmonic Suppression 2nd			-12	dBc
Pushing		5.0		MHz/V
Pulling		2.0		MHz/V
Tuning Port Capacitance		90		pF
Phase Noise	@ 10KHz	-97	-94	dBc/Hz
	@ 100KHz	-117	-114	dBc/Hz
Operating Temp. Range	-55		+125	°C